

**Percentiles - Proven Sires**

	<b>BWM</b>	<b>BW</b>	<b>WW</b>	<b>YW</b>	<b>MILK</b>	<b>CWT</b>	<b>FAT</b>	<b>REA</b>	<b>MARB</b>	<b>RP</b>	<b>TEND</b>
<b>Average</b>	-0.2	2.0	16	26	7	11.2	0.004	0.06	-0.01	-0.05	0.02
<b>High</b>	-2.2	-2.7	45	65	22	61.6	- 0.055	0.86	0.19	0.62	-0.30
<b>Low</b>	2.4	6.5	-8	-9	-13	-46.9	0.053	-0.69	-0.20	-0.67	0.39
<b>5%</b>	-1.1	-0.6	30	46	13						
<b>10%</b>	-0.9	0.0	27	41	12						
<b>15%</b>	-0.7	0.4	24	38	11						
<b>20%</b>	-0.6	0.8	23	36	10						
<b>25%</b>	-0.5	1.1	21	34	10						
<b>30%</b>	-0.4	1.3	20	32	9						
<b>35%</b>	-0.4	1.5	19	30	8						
<b>40%</b>	-0.3	1.7	18	29	8						
<b>45%</b>	-0.2	1.9	17	27	7						
<b>50%</b>	-0.2	2.0	16	26	7						
<b>55%</b>	-0.1	2.2	15	25	6						
<b>60%</b>	0.0	2.4	14	23	6						
<b>65%</b>	0.0	2.5	13	21	5						
<b>70%</b>	0.1	2.7	12	20	5						
<b>75%</b>	0.2	2.9	11	18	4						
<b>80%</b>	0.3	3.1	9	15	4						
<b>85%</b>	0.4	3.4	8	13	3						
<b>90%</b>	0.6	3.8	6	9	2						
<b>95%</b>	0.8	4.3	3	5	0						

**Percentiles - All Animals with EPDs**

	<b>BWM</b>	<b>BW</b>	<b>WW</b>	<b>YW</b>	<b>MILK</b>	<b>CWT</b>	<b>FAT</b>	<b>REA</b>	<b>MARB</b>	<b>RP</b>	<b>TEND</b>
<b>Average</b>	0.0	0.5	7	12	3	5.9	- 0.002	0.04	0.00	0.00	-0.01
<b>High</b>	-4.2	-6.0	47	67	25	61.6	- 0.082	1.21	0.32	0.90	-0.93
<b>Low</b>	3.7	8.4	-21	-34	-21	-46.9	0.084	-0.69	-0.28	-0.81	0.68
<b>5%</b>	-0.8	-1.7	21	34	11	37.1	- 0.038	0.50	0.16	0.47	-0.30
<b>10%</b>	-0.6	-1.2	18	29	9	30.5	- 0.030	0.42	0.11	0.34	-0.21
<b>15%</b>	-0.5	-1.0	16	26	8	26.1	- 0.023	0.32	0.08	0.27	-0.17
<b>20%</b>	-0.4	-0.8	14	23	7	22.6	- 0.019	0.26	0.06	0.21	-0.13
<b>25%</b>	-0.3	-0.6	12	20	6	19.4	- 0.015	0.22	0.04	0.16	-0.12
<b>30%</b>	-0.2	-0.6	11	18	6	16.8	- 0.012	0.19	0.03	0.11	-0.09
<b>35%</b>	-0.2	-0.5	10	16	5	14.1	- 0.010	0.14	0.02	0.08	-0.07
<b>40%</b>	-0.1	-0.3	8	14	4	11.3	- 0.008	0.10	0.01	0.06	-0.05
<b>45%</b>	-0.1	0.0	7	11	4	9.5	- 0.005	0.08	0.00	0.04	-0.03
<b>50%</b>	-0.1	0.2	6	9	3	6.8	- 0.003	0.05	-0.01	0.01	-0.01
<b>55%</b>	0.0	0.5	4	8	2	3.4	0.000	0.03	-0.02	-0.01	0.01
<b>60%</b>	0.0	0.7	3	6	2	1.6	0.002	0.00	-0.03	-0.04	0.03
<b>65%</b>	0.1	1.0	3	5	1	-1.1	0.004	-0.04	-0.04	-0.07	0.06
<b>70%</b>	0.2	1.3	2	4	0	-4.2	0.007	-0.10	-0.05	-0.13	0.08
<b>75%</b>	0.3	1.6	2	3	0	-6.8	0.011	-0.15	-0.06	-0.15	0.11
<b>80%</b>	0.3	1.9	1	2	0	-10.7	0.018	-0.18	-0.08	-0.20	0.13
<b>85%</b>	0.5	2.2	0	1	-1	-15.6	0.023	-0.30	-0.09	-0.26	0.18
<b>90%</b>	0.6	2.6	-2	-2	-2	-22.3	0.029	-0.35	-0.10	-0.35	0.21
<b>95%</b>	0.8	3.1	-4	-6	-4	-28.8	0.040	-0.45	-0.13	-0.45	0.25

### Summary Statistics - Proven Sires

Trait	Number	Average	Range	Std. Dev.	Acc. Range
<b>Birth Wt Maternal</b>	953	-0.2	2.4 to -2.2	0.58	.10 to .99
<b>Birth Weight</b>	953	2.0	6.5 to -2.7	1.47	.28 to .99
<b>Weaning Weight</b>	953	16.1	-7.9 to 45.2	8.36	.31 to .98
<b>Yearling Weight</b>	953	25.7	-8.6 to 65.3	12.50	.23 to .98
<b>Milking Ability</b>	953	6.7	-12.8 to 22.3	4.11	.04 to .98
<b>Carcass Weight</b>	79	11.2	-46.9 to 61.6	19.52	.04 to .86
<b>Fat</b>	79	0.004	0.053 to -0.055	0.02	.02 to .77
<b>REA</b>	79	0.06	-0.69 to 0.86	0.31	.02 to .83
<b>Marbling</b>	79	-0.01	-0.20 to 0.19	0.07	.02 to .75
<b>Retail Product</b>	79	-0.05	-0.67 to 0.62	0.24	.02 to .79
<b>Tenderness</b>	79	0.02	0.39 to -0.30	0.16	.01 to .55

**Summary Statistics - All Animals with EPDs**

Trait	Number	Average	Range	Std. Dev.	Acc. Range
<b>Birth Wt Maternal</b>	193417	0.0	3.7 to -4.2	0.51	.01 to .99
<b>Birth Weight</b>	193417	0.5	8.4 to -6.0	1.52	.01 to .99
<b>Weaning Weight</b>	193417	7.0	-20.8 to 47.1	7.94	.01 to .98
<b>Yearling Weight</b>	193417	11.7	-34.0 to 67.3	12.36	.01 to .98
<b>Milking Ability</b>	193417	3.2	-20.5 to 24.5	4.50	.01 to .98
<b>Carcass Weight</b>	281	5.9	-46.9 to 61.6	20.19	.02 to .91
<b>Fat</b>	281	-0.002	0.084 to -0.082	0.02	.02 to .84
<b>REA</b>	281	0.04	-0.69 to 1.21	0.30	.02 to .90
<b>Marbling</b>	281	0.00	-0.28 to 0.32	0.09	.02 to .83
<b>Retail Product</b>	281	0.00	-0.81 to 0.90	0.27	.02 to .86
<b>Tenderness</b>	281	-0.01	0.68 to -0.93	0.19	.01 to .66

## Trends

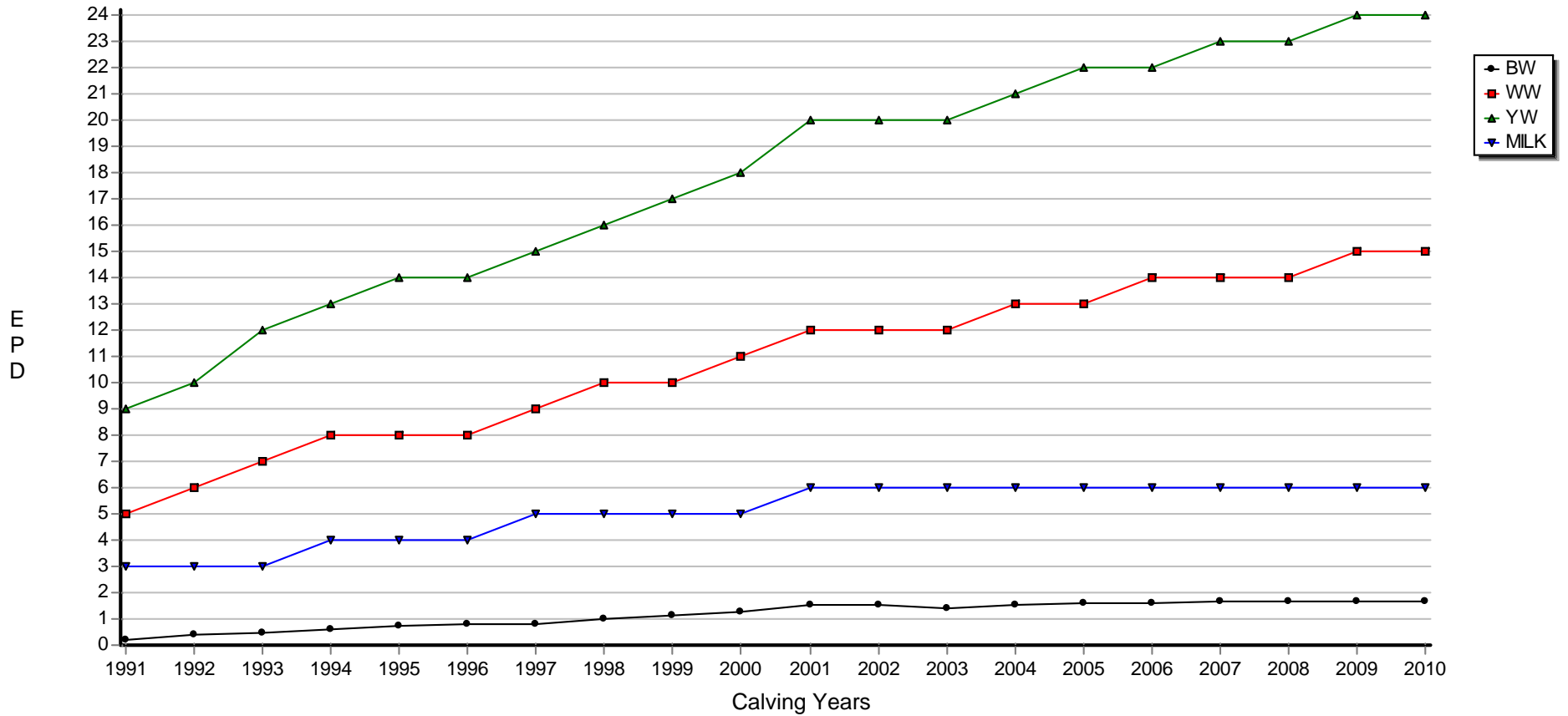
American Brahman Breeders

Date: 16/11/2011

Trend Year	Sex	BW		WW		YW		MILK		CWT		REA		MARB		FAT		RP		SHEAR	
		EPD	Num	EPD	Num	EPD	Num	EPD	Num	EPD	Num	EPD	Num	EPD	Num	EPD	Num	EPD	Num	EPD	Num
1991	A	0.2	5873	5	5873	9	5873	3	5873	1	14	0	14	-0.03	14	-0.01	14	0.00	14	0.02	14
1992	A	0.4	5981	6	5981	10	5981	3	5981	-6	26	0	26	0.00	26	0.00	26	0.00	26	0.10	26
1993	A	0.5	6292	7	6292	12	6292	3	6292	8	20	0	20	-0.01	20	0.01	20	0.00	20	-0.09	20
1994	A	0.6	6371	8	6371	13	6371	4	6371	8	38	0	38	-0.01	38	0.00	38	0.00	38	0.01	38
1995	A	0.7	7062	8	7062	14	7062	4	7062	1	27	0	27	-0.01	27	-0.01	27	0.00	27	-0.06	27
1996	A	0.8	6425	8	6425	14	6425	4	6425	9	22	0	22	0.00	22	-0.01	22	0.00	22	0.07	22
1997	A	0.8	5785	9	5785	15	5785	5	5785	10	36	0	36	0.00	36	0.00	36	0.00	36	-0.01	36
1998	A	1.0	5455	10	5455	16	5455	5	5455	9	10	0	10	0.00	10	0.01	10	0.00	10	-0.01	10
1999	A	1.1	5203	10	5203	17	5203	5	5203	2	8	0	8	0.00	8	0.00	8	0.00	8	-0.03	8
2000	A	1.3	5144	11	5144	18	5144	5	5144	11	17	0	17	-0.03	17	0.00	17	0.00	17	-0.02	17
2001	A	1.5	4625	12	4625	20	4625	6	4625	3	7	0	7	-0.02	7	-0.01	7	0.00	7	0.04	7
2002	A	1.5	4129	12	4129	20	4129	6	4129	16	7	0	7	0.03	7	0.01	7	0.00	7	0.05	7
2003	A	1.4	4431	12	4431	20	4431	6	4431	17	5	0	5	0.03	5	0.00	5	0.00	5	0.03	5
2004	A	1.5	4971	13	4971	21	4971	6	4971	-1	4	0	4	-0.04	4	-0.01	4	0.00	4	-0.04	4
2005	A	1.6	4998	13	4998	22	4998	6	4998	6	4	0	4	-0.03	4	0.00	4	0.00	4	0.05	4
2006	A	1.6	4970	14	4970	22	4970	6	4970		0		0		0		0		0		0
2007	A	1.7	5677	14	5677	23	5677	6	5677		0		0		0		0		0		0
2008	A	1.7	6140	14	6140	23	6140	6	6140		0		0		0		0		0		0
2009	A	1.7	5708	15	5708	24	5708	6	5708		0		0		0		0		0		0
2010	A	1.7	5183	15	5183	24	5183	6	5183		0		0		0		0		0		0

# OVERALL TRENDS

American Brahman Breeders Association



OVERALL TRENDS