

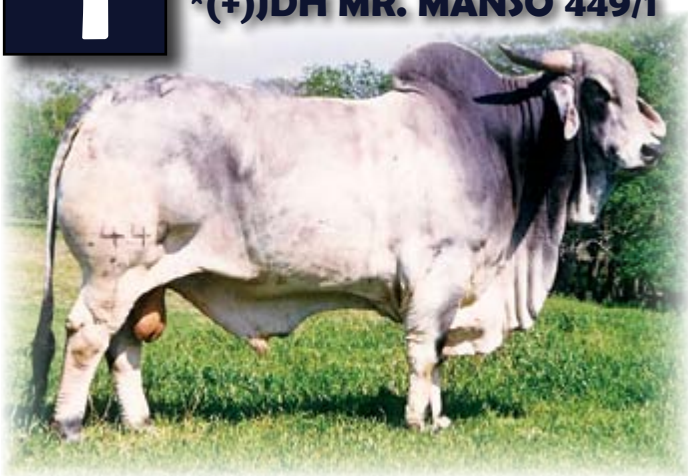
2012 International Semen Sale

BRAHMAN



Lot
1

(+)*JDH MR. MANSO 449/1



+JMD ELEFANTE MANSO 226/3
 (+)JDH GREGORY R MANSO 386/5
 JDH LDY RIM DE MAN 123/4
Sire: (+)JDH MR. CHARLEY MANSO 590/6
 JDH EQUITO DE MANSO 783
 +JDH LDY EQUITO MAN438/2
 THA LDY OPT STET MANSO50 50/1

+MR. V8 347/2
 MR. V8 730/2
 +MISS V8 55/2
Dam: JDH LADY MANSO 197/8
 JDH VINIEGRA RS MANSO 287/4
 JDH MISS SWATO DE MANSO 883/5
 JDH MISS SWAT MANSO 8 804/2

ABBA #	B 719086
DOB:	3/15/1994
— E P D S —	
BW	4.1
WW	27
YW	47.7
Milk	20.4

Donated by: J.D. Hudgins Inc. – Forgason Div.

- The Complete Sire – Register of Renown, Maternal Performance Sire & Trait Leader for Three Traits
- Former Show Champion & Producer of Champions
- Ranks in Top 5% of breed for WW, YW & Milk and Top 30% for 6 other traits.
- Great (+) Charley Manso 590 son and out of a Top Donor (produced 30 calves).

Lot
2

****JDH BROSS MANSO 949/2***



LSU CHARLIE DE MANSO 22 845
 MN MAYRO MANSO 712/1
 MN MATTIE DE MANSO 841

Sire: MN MAYRO MANSO 433/2
 MN MAYRO IMPERATOR 412/1
 MN MISS IMPOMANSO 92/2
 MN MISS MAYROMANSO 777/1

ABBA #	B 610839
DOB:	1/11/1987
— E P D S —	
BW	1.7
WW	8.5
YW	12.5
Milk	8.3

JDH TOWERS DE MANSO 539/8
 JDH MURT DE MANSO 170/3
 +JDH LADY RHA MANSO 19 719

Dam: JDH LADY BROSSMAN MANSO 348
 THA STETZEL DE MANSO 886
 THA LDY OPT STET MANSO 49
 THA LADY V-8 747

Donated by: J.D. Hudgins Inc. – Koonce Div.

- One of the most widely used bulls in the world – Over 700 progeny registered from over 40 herds in 6 countries.
- Ranks in the Top 30% of the Breed for 5 Traits, Trait Leader for BW Maternal.
- A Proven Herd Sire- Sired 1 Maternal Merit, 4 Register of Renown's, Multiple Herd Sires & Donor Dams.

2012 International Semen Sale

BRAHMAN



Lot
3

LMC LF AMBASSADOR 700/7 (P)



(=)JDH SIR ALEXO MANSO 24/4
JDH FRESNO MANSO 19/6
JDH LADY CLA MANSO 964/4

ABBA #	B 866236
DOB:	4/1/2007
— E P D S —	
BW	1.7
WW	10.3
YW	13.1
Milk	5.1

Sire: JDH MR GEORGE MANSO 187/1
JDH BAXTER MANSO 188/5
JDH MISS DELIA MANSO 41/6
JDH LADY ZARA MANSO 154/5

JDH SIR JULIO MANSO 835/3
MR. V8 900/3
MISS V8 77/3

Dam: MISS V8 899/4 (P)
REG MANSO 830
FS LADY REG 1220 (P) 220/1
LADY SEALY MANSO 846

Donated by: *La Muneca Cattle Co.*

- One of the top smooth POLLED bulls in the breed.
- Sire of the Grand Champion Female & Champion Get of Sire – 2012 San Antonio Livestock Exposition
- Best described as a heavy boned, deep ribbed, long bodied, level topped, heavy muscled bull.
- Has never had an offspring culled/Averages over \$7,000 on offspring sold!

Lot
4

*JDH HANSON MANSO 682/7



+JDH SIR LIBERTY MANSO 847/5
JDH MR WOODMAN MANSO 578/6
JDH LADY NELDA MANSO 485/5

ABBA #	B 865441
DOB:	3/27/2007
— E P D S —	
BW	3.5
WW	32.6
YW	45.6
Milk	7.2

Sire: JDH WOODSON DE MANSO 206/7
(=)JDH PRESCOT MANSO 82/6
JDH LADY IRMA MANSO 484/6
JDH LADY CORA MANSO 339/5

+JK SUGAR CRATA 45
(+)JDH REMINGTON MANSO 784/2
JDH PHODID MANSO 119/2
Dam: JDH LADY CLYDE MANSO 599/6
JDH KINGMAN MANSO 349/5

=JDH APHRODITE MANSO 901/5
JDH LADY MONTE MANSO 994/4

Donated by: *J.D. Hudgins, Inc. – Hudgins Div.*

- Ranks In the Top 2% of the Breed for Growth (WW & YW)
- Bottom side of the pedigree represents some of the breeds most Maternal genetics, (+) Remington & = JDH Aphrodite
- Rare Opportunity to purchase semen on a son of the International Champion, JDH Woodson 206/7.

2012 International Semen Sale

BRAHMAN



Lot
5

HK MAGNATE 607



HK MR. AMERICA 379/1
+HK MR. AMERICA 435/2
MISS 3X MATRIARCH 71

Sire: HK MAGNETIC 336

+HK PASSPORT 777
HK MS. PASSPORT 125/7
HK MS. BLUE BLOOD 633

MR. 3X RED DYNASTY 75
+HK PASSPORT 777

Dam: HK MS. PASSPORT 307

HK MILLIONAIRE 513/1
HK MS. AMERICA 702
HK MISS AMERICA 355/1

ABBA #	B 838035
DOB:	1/17/2004
— E P D S —	
BW	3.2
WW	25.3
YW	35.2
Milk	9.7

Donated by: HK Cattle

- One of the most performance oriented Red Brahman bulls in the breed – Ranking in Top 15% for WW, YW & Milk.
- One of the stoutest made, beefiest Red Brahman bulls in the breed.
- Elite pedigree – Son of the great Magnetic 336 that has been successfully used around the world and a top Passport daughter.

Lot
6

JDH MR CROSBY MANSO 656/6



(+)JDH DAKOTA MANSO 599
JDH MR BRAHMAN MANSO 175
+JDH LADY GREGA MANSO 372/4

Sire: +JDH SIR LIBERTY MANSO 847/5
(+)JDH REMINGTON MANSO 784/2
+JDH LADY REMINGTON MANS 194/4
JDH QUEEN AUDRA DE MANSO 114/3

ABBA #	B 808294
DOB:	9/1/2000
— E P D S —	
BW	1.5
WW	4.4
YW	17.1
Milk	7.5

+JJ DIDOR IMPERATOR 258
(+)JJ DIDOR CRATA 389
\$JJ MISS PONCRATA 304

Dam: JJ MS DIDOR MANSO 690
JDH PALESTIMO DE MANSO 310/1
JDH MISS BETTY DE MANSO 450/2
JDH LADY 77 MANSO 770/1

Donated by: J.D. Hudgins Inc. –Locke Div., JT Brahmans – Jim-Bob and Lauren Trant

- A great son of +JDH Sir Liberty Manso that is producing replacements and herd bulls for JT Brahmans, JDH-Locke Div., Silent G Ranch and others.
- The dam of Crosby is a top (+) JJ 389 daughter and also the Maternal Grand dam to JDH Mr. Brahman Manso 175.
- A great opportunity to purchase a nice genetic combination that is otherwise not available.

2012 International Semen Sale

BRAHMAN



lot
7

MN MAYRO MANSO 433/2



Pictured above:
MN MAYRO MANSO 433/2 sons - (=) JDH 310/2 (L), (=) JDH 204/2 (R)

LSU CHARLIE DE MANSO 1 676
LSU CHARLIE DE MANSO 22 845
JOYCE 29 OF LSU 658

Sire: MN MAYRO MANSO 712/1
+MN IMPERMANSO 448
MN MATTIE DE MANSO 841
MN LDY SUVA DE MANSO 585

MN MAYRO IMPERATOR 23/1
MN MAYRO IMPERATOR 412/1
DGM MISS PARLINE MARSO 793/4

Dam: MN MISS IMPOMANSO 92/2
LSU CHARLIE DE MANSO 22 845
MN MISS MAYROMANSO 777/1
MN MAGGIE DE MANSO 789

ABBA #	B 353362
DOB:	2/24/1981
— E P D S —	
BW	4.3
WW	21.3
YW	24.1
Milk	16.4

Donated by: J.D. Hudgins Inc. – Locke Div.

- A Proven Performance & Maternal Sire- Sired 2 Maternal Performance Sires & 2 Maternal Merit Dams.
- Sire of (=) JDH 204/2, (=) JDH 310/2, JDH Bross Manso & Dam of + JDH Brandon.
- Ranks in the Top 20% of the breed for WW & 1% for Milk.
- Outcross and proven compatible to many of today's popular bloodlines.
- Influence shows in many of today's proven carcass animals.

lot
8

SCD DIDOR ESTO 623/1



+JME DIDOR ESTO 241
+JJ DIDOR ESTO 204
JJ MS DIDOR MANSO 363/1

Sire: +SCD DIDOR ESTO 302
MSP COUNTRY BOY 175
\$OLP MS COUNTRY SUE 239
OLP LADY WRINKLES 136

ABBA #	B 877366
DOB:	1/5/2009
— E P D S —	
BW	2.2
WW	21.2
YW	35.4
Milk	10.2

+MR. V8 702/3
+MR. V8 777/4 777/4
+MISS V8 666/3

Dam: +SCD LADY SARAH 168
(+)JDH MR. MANSO 449/1
S BAR MISS 599/8
+JDH LADY MANSO 78/1

Donated by: D Bar Ranch

- One of the Top Young Bulls in the Breed – combines Performance, Pedigree & Eye Appeal
- 2011 ABBA Show Bull of the Year - Won 15 Grand or Reserve Grand Championships.
- Ranks in Top 20% of breed for WW, YW & Milk
- Pedigree boasts one of the strongest maternal pedigrees in the breed.

2012 International Semen Sale

BRAHMAN



Lot
9

***JDH SIR KANSAS MANSO 440/1**



(+)MR. V8 777/2
JDH MR. MANSO 550/8F
JDH LADY TAGO MANSO 790/5

ABBA #	B 855010
DOB:	2/24/2006
— E P D S —	
BW	4.5
WW	27.5
YW	41
Milk	6.4

Sire: (=)JDH MR. MANSO 209/9
(+)JDH MR. CHARLEY MANSO 590/6
JDH QUEEN MERRY MANSO 921/7
JDH QUEEN ROFI MANSO 830/5

+TTT MR. SUVA CRATA 450
(+)JDH DATAPACK MANSO 563/5
JDH LADY MIL MANSO 780/4
Dam: JDH DATA RAL MANSO 871/5
(+)JDH COPANO MANSO 839/9
JDH LADY RAL MANSO
JDH LADY ANNE H MANSO 575/3

Donated by: J.D. Hudgins Inc. – Leslie Hudgins

- A top producing, heavy boned, deep ribbed, nice profiling, dark pigmented bull that has been used around the world.
- A son of the (=) JDH Mr. Manso 209/9 that is one of the most versatile bulls in the breed producing cattle that perform in both the show ring and pasture and one of the top producing females for the Bubba Hudgins Family.
- Ranks in the Top 5% of the breed for WW & YW.

Lot
10

JDH PETER PAN MANSO 591/4



(+)JDH MR. MANSO 449/1
(=)JDH ATARI OYO MANSO 431/3
JDH SARASOTA LADY MANSO 895/2

ABBA #	B 874686
DOB:	4/8/2008
— E P D S —	
BW	3.2
WW	21.5
YW	38.4
Milk	10.7

Sire: JDH MR MATT MANSO 142/4
(+)JDH COPANO MANSO 839/9
=JDH NATASHA MANSO 140/3
=JDH MS VANNA MANSO 237/2

JDH MR BRAHMAN MANSO 175
+JDH SIR LIBERTY MANSO 847/5
+JDH LADY REMINGTON MANS 194/4
Dam: JDH LADY PATZER MANSO 687/3
(=)JDH SIR ALEXO MANSO 24/4
=JDH COLVILLE MANSO 148/3
MISS JDH 997/1 YL MANSO 997/1

Donated by: J.D. Hudgins Inc. – Locke Div.

- Combines Performance, Eye Appeal and Pedigree!
- Ranks in the Top 20% of the breed for WW and Top 10% for YW & Milk.
- Pedigree consists of some of the breed greats consisting of 9 Maternal Merit, Maternal Performance Sire or Register of Renown animals.
- Outcross top side of the pedigree and out of a dam who has a 365 day calving interval over 5 calves.

2012 International Semen Sale

BRAHMAN



Lot
11

+MR 3X MAXMILLION-AIRE56



EOD TORGSON 618
+HK TORGSON 426/4
MS CHEROKEE TORGSON 1/717LT
Sire: +HK MR. AMERICA 61/9
+RIO CHEROKEE 978
MISS HK RIO 49/0
MISS CHEROKEE ARAUTO 684

ABBA #	B 558425
DOB:	4/25/1983
— E P D S —	
BW	0.4
WW	16
YW	31
Milk	8.4

BRILHANTE 736
RIO KING 94/1
LA-NUEVA ADELITA 519G
Dam: DF MISS RED HIDALGO 191
VL MANSO 111/6
VL ELENA 9/117
VL ELENA 40/7

Donated by: Santa Elena Ranch

- Register of Renown
- Sire of National & International Champions
- Son of the Immortal Millionaire and one of the most influential cows in the breed having produced 3 Register of Renown Herd Sires.
- Offers an ideal genetic profile ranking in the Top 15% of the breed for BW and Top 30% for YW & Milk.

Lot
12

***+JDH MR. MANSO 854/4**



(+)JDH MR. CHARLEY MANSO 590/6
JDH CHARLEY'S JAZZ 946/1
+JDH LADY MANSO 76/1
Sire: JDH ATLAS MANSO 328/3
JDH MR. MANSO 627/8F
+JDH LADY MANSO 251/9
JDH MISS VANESSA MANSO 434/7

ABBA #	B 854045
DOB:	3/11/2006
— E P D S —	
BW	0.9
WW	14.3
YW	29.6
Milk	7.8

(=)JDH SIR ALEXO MANSO 24/4
JDH SAGE MANSO 92/1
JDH LADY MANSO 981/8
Dam: JDH LADY MANSO 953/3
(+)JDH MADISON DE MANSO 737/4
JDH LADY MANSO 429/1
JDH LADY MANSO 470/9

Donated by: J.D. Hudgins, Inc. – Forgason Cattle Co.

- Former Show Bull for the Forgason Family – Winning 8 Division or Res. Division Titles.
- Produced Multiple Show Winners most notable is JDH Mr. Manso 638 – Res. Jr. Champ at Ft. Worth & Jr. Champ at San Antonio.
- A son of the 2009 Sire of the Year in Brazil, JDH Atlas and a top donor from that combines Sage & (+) Madison 737.
- Outstanding young sire that will prove to impact the breed.

2012 International Semen Sale

BRAHMAN



Terms & Conditions

- All semen will be sold in 5 straw packages.
 - All lots will have 10 AI Certificates issued except for those denoted with an * who will have 5 AI Certificates issued.
 - The proceeds from this semen sale will benefit the ABBA Research & Breed Improvement Committee with their programs and projects.
 - All semen must be paid for at the conclusion of the sale and must be shipped or transferred into your account no later than 90 days after the conclusion of the sale.
-

We appreciate the generosity of the consignors for their donations of this great line up of semen.

